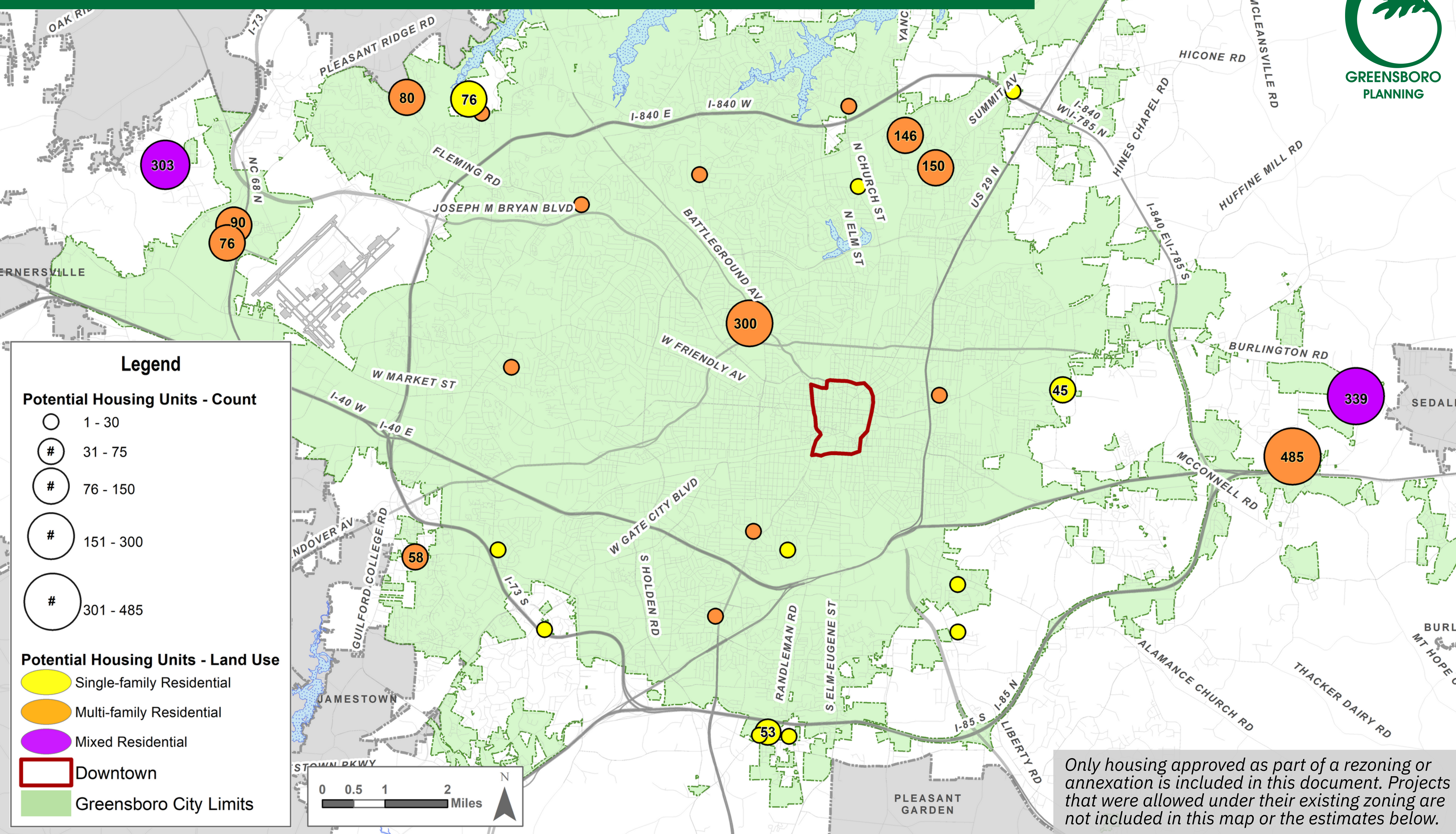


GROWING GREENSBORO

2024

An update of growth and development figures in Greensboro, NC



POTENTIAL HOUSING UNITS

On the **671 acres** that were annexed or rezoned in 2024

Multi-Family Residential = 1,708 (72%)

Single-Family Residential = 677 (28%)

Total = 2,385 units were approved.

17,732

potential housing units approved 2021-2024



TYPES OF CASES



ANNEXATIONS

287 acres
added to the City

71% (or 203 acres) is intended for **Residential**

7% (or 20 acres) is intended for **Industrial**



REZONINGS

384 acres
rezoned in Greensboro

42% (or 162 acres) is intended for **Residential**

44% (or 168 acres) is intended for **Industrial**

Promoting Quality Growth Throughout Greensboro

Note: Data is based on "maximum number of units allowed" on conditionally zoned properties or calculations based on zoning district allowance and the size of the property. Potential unit counts are not required for some applications and are based on best available data.